



# J. R. FLEMING GRANDSTAND

*You dream it we host it*

A multi-purpose space spanning three levels with seamless indoor and outdoor flow.

ENQUIRE NOW

CONFERENCES • FAMILY DAYS • EXHIBITIONS •  
PRODUCT & CAR LAUNCHES



ROSEHILL  
GARDENS



Vibrant in style and imposing in nature the newly refurbished J.R. Fleming Grandstand is one of our most pliable spaces, adaptable to any vision to create experiences like nowhere else. Positioned alongside the trackside lawn, it is perfectly suited to outdoor functions requiring adjoining indoor space such as conferences and exhibitions.

It can be used in its entirety or broken up into smaller areas for more intimate functions. All levels are connected via internal elevators and escalators for an effortless flow of guests between multiple levels. The perfect takeover space for large events.



## VENUE FEATURES

- Three levels of versatile event spaces
- Natural light and carpeted floor
- Seamlessly adjoins trackside lawn space with racecourse views
- Adjacent to Exhibition Hall for added space
- Free high density WiFi
- Multi-panel LED screen
- Wall mounted LCD screens
- Public address sound system
- Roller door access
- Standard and three phase power
- Phone and data services
- Existing bars and café outlets
- Amenities
- Air conditioned
- Free onsite parking
- Onsite security

## SUITABLE FOR

Conferences, Seminars, Special Events, Cocktail Parties, Product & Car Launches, Corporate Family Days, Exams, Trade Exhibitions & Consumer Shows

Lower Ground: 1230m<sup>2</sup>

Ground: 4189m<sup>2</sup>

Level 2: 1490m<sup>2</sup>

Level 3: 609m<sup>2</sup>

# GROUND FLOOR

J.R. Fleming  
Grandstand



## VENUE CAPACITY - GROUND

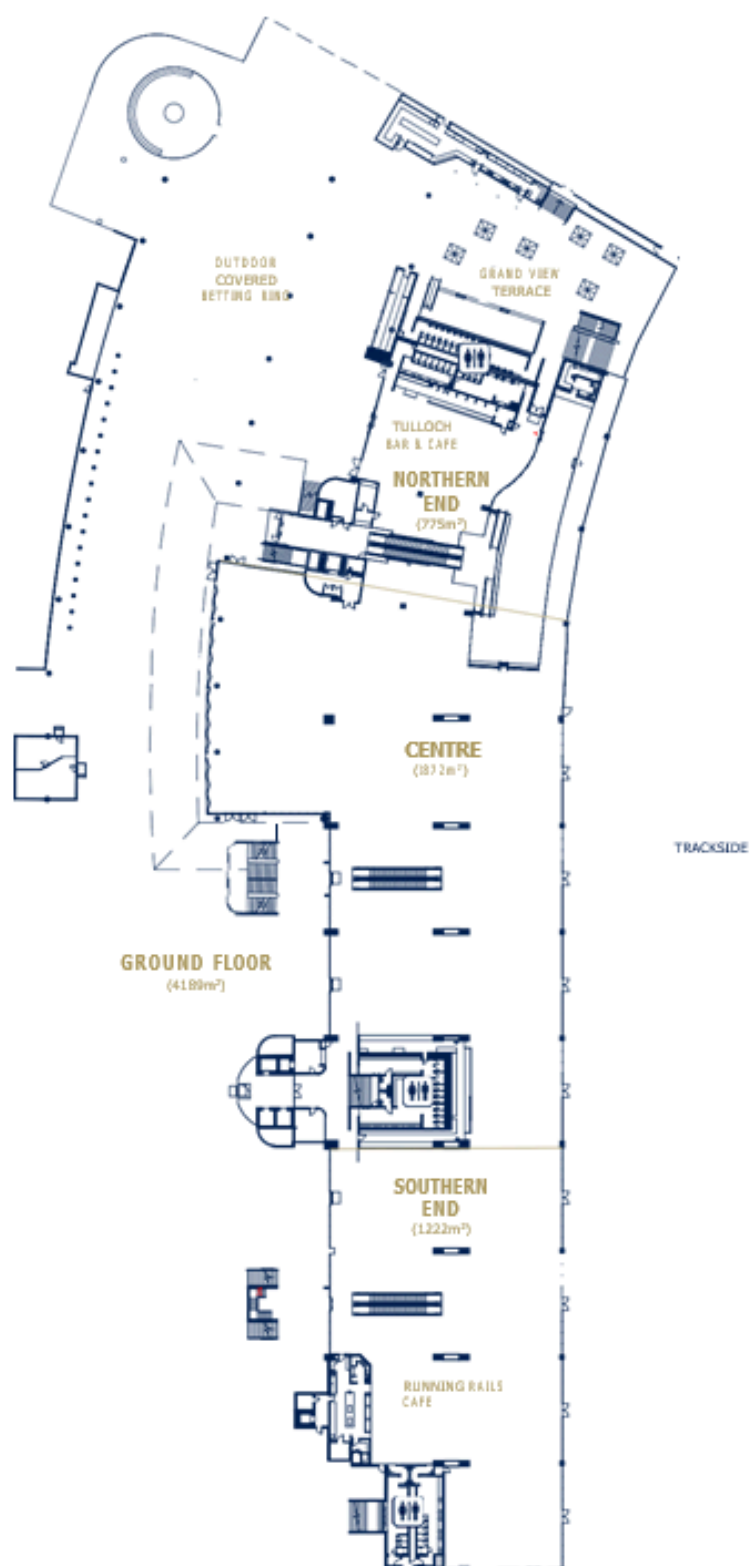
THEATRE	400
COCKTAIL	600
EXAMS	300
EXHIBITION BOOTHS	50



ROSEHILL  
GARDENS

# LEVEL ONE

J.R. Fleming  
Grandstand



## VENUE CAPACITY - LEVEL 1

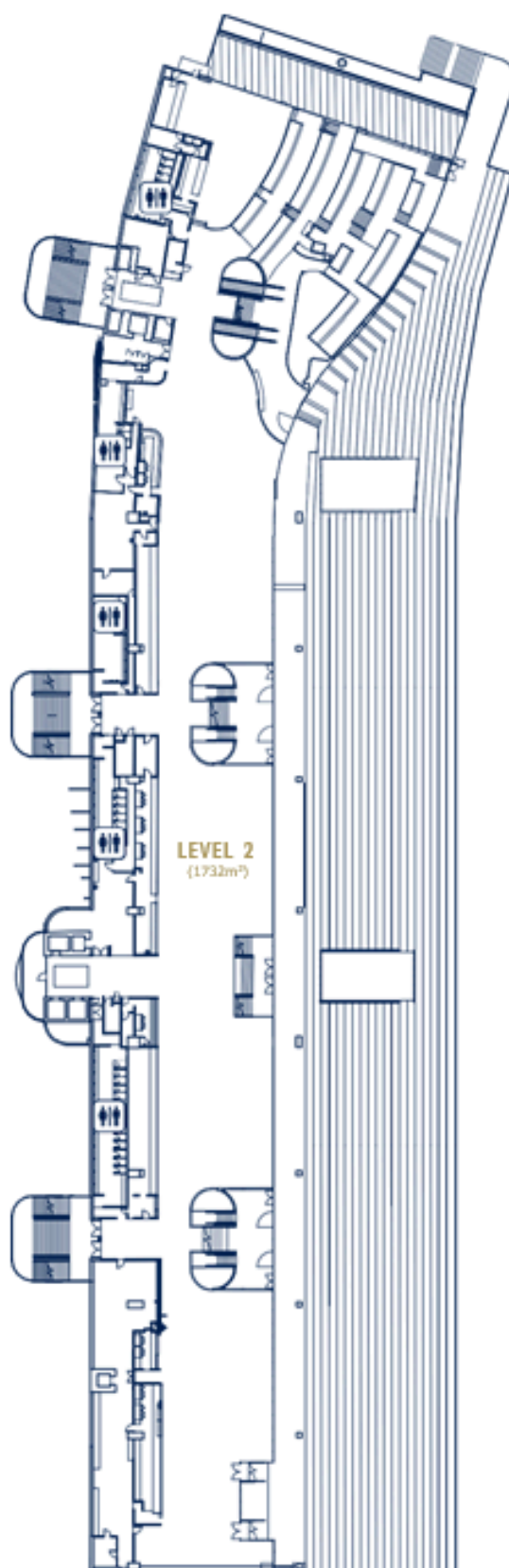
THEATRE	2200
CLASSROOM	1150
COCKTAIL	4850
BANQUET	1000
EXAMS	650
EXHIBITION BOOTHs	403



ROSEHILL  
GARDENS

# LEVEL TWO

J.R. Heming grandstand



## VENUE CAPACITY - LEVEL 2

THEATRE	250
CLASSROOM	200
COCKTAIL	350
BANQUET	330
EXAMS	150
EXHIBITION BOOTHS	23



ROSEHILL  
GARDENS



# LEVEL THREE

J.R. Fleming  
grandstand

LEVEL 3  
(609m<sup>2</sup>)



## VENUE CAPACITY - LEVEL 3

THEATRE	920
CLASSROOM	528
COCKTAIL	1020
BANQUET	720
EXAMS	80
EXHIBITION BOOTHS	12



ROSEHILL  
GARDENS



ROSEHILL  
GARDENS

**TO FIND OUT MORE PLEASE CONTACT OUR  
MEETINGS & EVENTS TEAM**

P | 1300 729 668

E | [meetingsandevents@australianurfclub.com.au](mailto:meetingsandevents@australianurfclub.com.au)